

August 2014

Euro area unemployment rate at 11.5%

EU28 at 10.1%

The **euro area**¹ (EA18) seasonally-adjusted² unemployment rate³ was 11.5% in August 2014, stable compared with July 2014⁴, but down from 12.0% in August 2013. The **EU28**¹ unemployment rate was 10.1% in August 2014, the lowest value since February 2012. The rate was down from 10.2% in July 2014⁴, and from 10.8% in August 2013. These figures are published by **Eurostat, the statistical office of the European Union**.

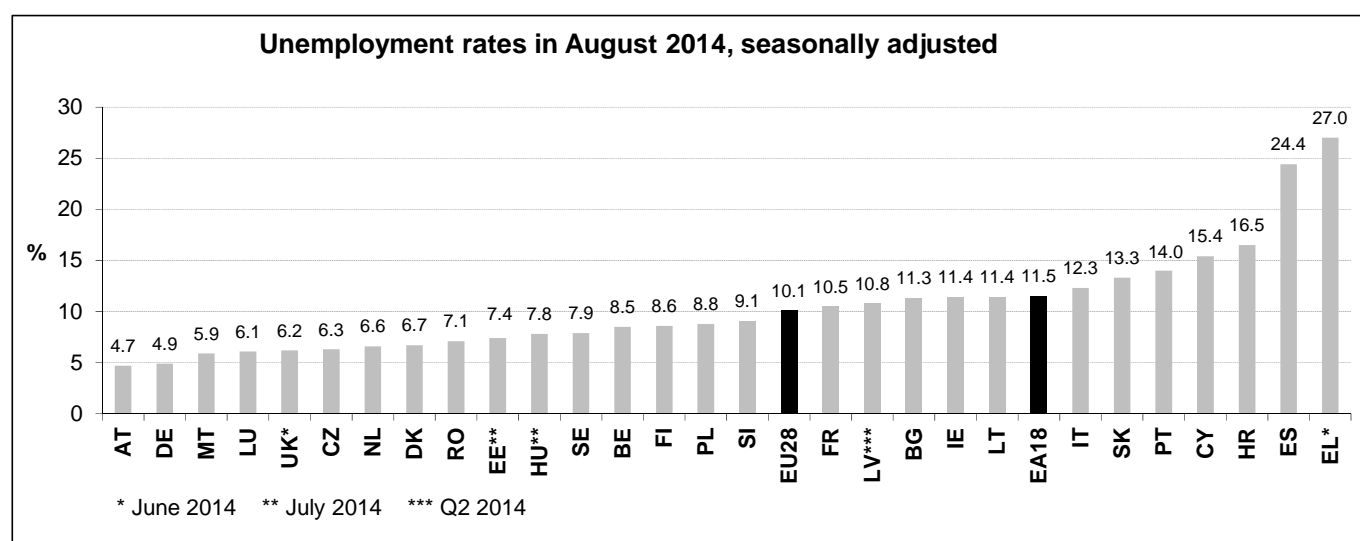
Eurostat estimates that 24.642 million men and women in the **EU28**, of whom 18.326 million were in the **euro area**, were unemployed in August 2014. Compared with July 2014, the number of persons unemployed decreased by 134 000 in the **EU28** and by 137 000 in the **euro area**. Compared with August 2013, unemployment fell by 1.745 million in the **EU28** and by 834 000 in the **euro area**.

Member States

Among the Member States, the lowest unemployment rates were recorded in **Austria** (4.7%) and **Germany** (4.9%), and the highest in **Greece** (27.0% in June 2014) and **Spain** (24.4%).

Compared with a year ago, the unemployment rate fell in twenty-two Member States, increased in four and remained stable in two. The largest decreases were registered in **Hungary** (10.2% to 7.8% between July 2013 and July 2014), **Portugal** (16.1% to 14.0%), **Spain** (26.1% to 24.4%) and **Croatia** (18.2% to 16.5%), and the highest increases were registered in **Finland** (8.1% to 8.6%) and **France** (10.2% to 10.5%)

In August 2014, the unemployment rate in the **United States** was 6.1%, down from 6.2% in July 2014, and from 7.2% in August 2013.



Youth unemployment

In August 2014, 4.989 million young persons (under 25) were unemployed in the **EU28**, of whom 3.332 million were in the **euro area**. Compared with August 2013, youth unemployment decreased by 602 000 in the **EU28** and by 210 000 in the **euro area**. In August 2014, the youth unemployment rate⁵ was 21.6% in the **EU28** and 23.3% in the **euro area**, compared with 23.5% and 23.9% respectively in August 2013. In August 2014, the lowest rates were observed in **Germany** (7.6%), **Austria** (8.2%) and the **Netherlands** (10.1%), and the highest in **Spain** (53.7%), **Greece** (51.5% in June 2014), **Italy** (44.2%) and **Croatia** (43.9% in the second quarter 2014).

1. The euro area (EA18) includes Belgium, Germany, Estonia, Ireland, Greece, Spain, France, Italy, Cyprus, Latvia, Luxembourg, Malta, the Netherlands, Austria, Portugal, Slovenia, Slovakia and Finland.
The EU28 includes Belgium (BE), Bulgaria (BG), the Czech Republic (CZ), Denmark (DK), Germany (DE), Estonia (EE), Ireland (IE), Greece (EL), Spain (ES), France (FR), Croatia (HR), Italy (IT), Cyprus (CY), Latvia (LV), Lithuania (LT), Luxembourg (LU), Hungary (HU), Malta (MT), the Netherlands (NL), Austria (AT), Poland (PL), Portugal (PT), Romania (RO), Slovenia (SI), Slovakia (SK), Finland (FI), Sweden (SE) and the United Kingdom (UK).
The tables also include Iceland, Norway and the United States.
2. Non-seasonally adjusted and trend data can be found in the statistical database on the Eurostat website. For further details please refer to the *Unemployment statistics* article in Statistics Explained:
http://epp.eurostat.ec.europa.eu/statistics_explained/index.php/Unemployment_statistics
3. Eurostat produces harmonised unemployment rates for individual EU Member States, the euro area and the EU. These unemployment rates are based on the definition recommended by the International Labour Organisation (ILO). The measurement is based on a harmonised source, the European Union Labour Force Survey (LFS).
Based on the ILO definition, Eurostat defines unemployed persons as persons aged 15 to 74 who:
 - are without work;
 - are available to start work within the next two weeks;
 - and have actively sought employment at some time during the previous four weeks.The *unemployment rate* is the number of people unemployed as a percentage of the labour force. The *labour force* is the total number of people employed plus unemployed. In this news release unemployment rates are based on employment and unemployment data covering persons aged 15 to 74.
4. The data in this News Release are normally subject to small revisions, caused by the updates to the seasonally adjusted series whenever new monthly data are added. Larger revisions can occur when the most recent LFS data are included in the calculation process. Compared with the rates published in News Release 129/2014 of 29 August 2014, the July 2014 unemployment rates remain unchanged at 11.5% for the EA18 and 10.2% for the EU28. Among Member States, rates have been revised between 0.2 and 0.4 percentage points for Bulgaria, France, Croatia and Malta. The rate has been revised upwards by 0.8 percentage points for Cyprus, and downwards by 0.7 percentage points for Slovenia and by 0.5 percentage points for Slovakia. The whole time series for Romania has been revised after the inclusion of the latest Census results in the weighting of the LFS: over the period January 2004-July 2014, the average revision is -0.2 percentage points.
5. The *youth unemployment rate* is the number of people aged 15 to 24 unemployed as a percentage of the labour force of the same age. Therefore, the youth unemployment rate should not be interpreted as the share of jobless people in the overall youth population. For further details please refer to the *Youth unemployment* article in Statistics Explained:
http://epp.eurostat.ec.europa.eu/statistics_explained/index.php/Youth_unemployment
6. Latvia: quarterly data for all series.
Croatia, Cyprus, Romania and Slovenia: quarterly data for youth unemployment.
7. For Germany, the Netherlands, Austria, Finland, Sweden and Iceland the trend component is used instead of the more volatile seasonally adjusted data. For Sweden and Iceland, seasonally adjusted data are available in the online data base on the Eurostat website: http://epp.eurostat.ec.europa.eu/portal/page/portal/statistics/search_database
8. For Denmark, Estonia, Hungary, the United Kingdom and Norway 3-month moving averages of LFS data are used instead of pure monthly indicators.

Issued by: **Eurostat Press Office**

Tim ALLEN
Tel: +352-4301-33 444
eurostat-pressoffice@ec.europa.eu

Eurostat news releases on internet:
<http://ec.europa.eu/eurostat>

For further information on data:

Nicola MASSARELLI
Tel: +352-4301-34 525

Hubertus VREESWIJK
Tel: +352-4301-34 323

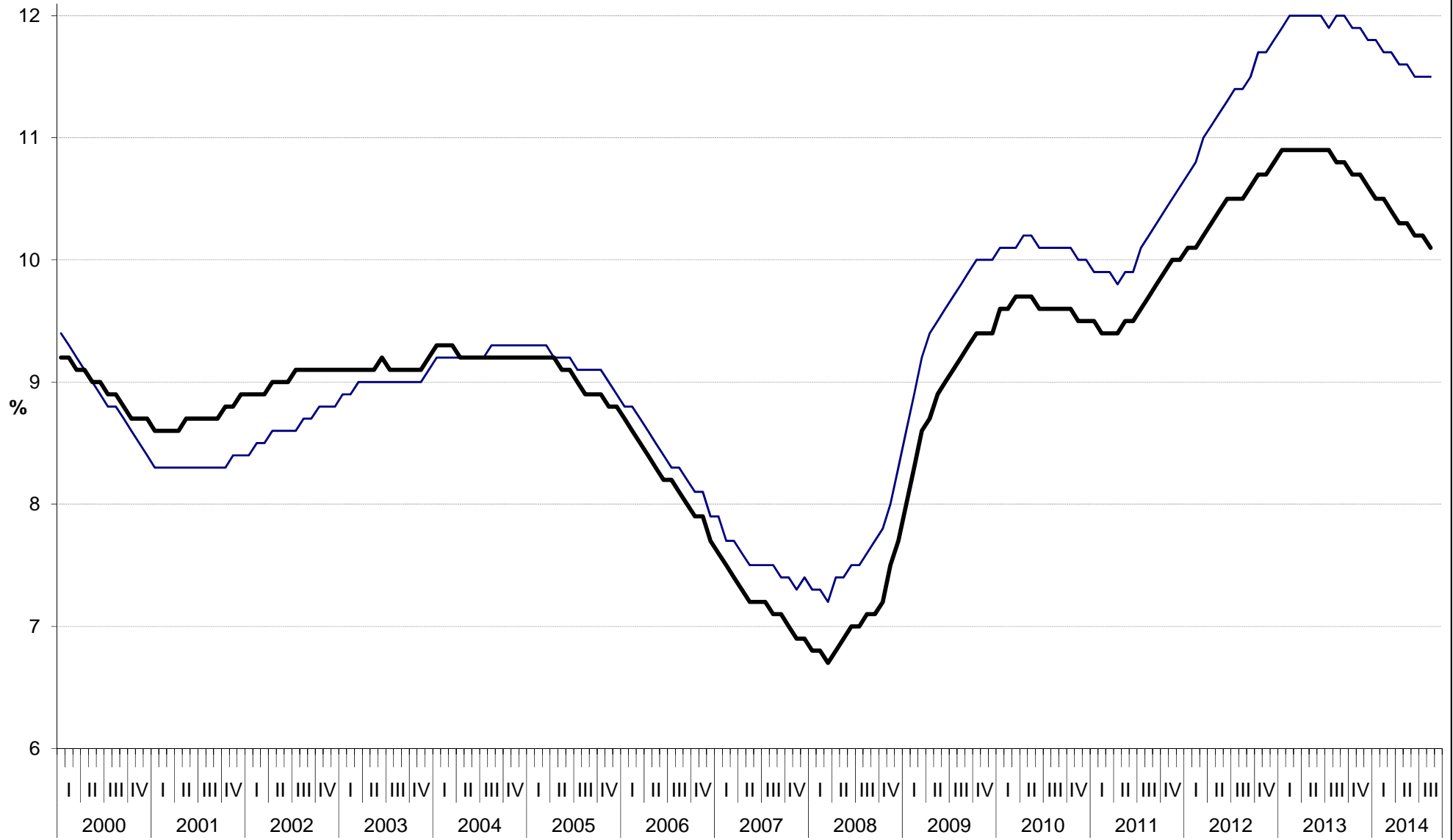
estat-monthly-unemployment@ec.europa.eu

Selected Principal European Economic Indicators: <http://ec.europa.eu/eurostat/euroindicators>
Follow Eurostat on Twitter: http://twitter.com/EU_Eurostat

Euro area and EU28 unemployment rates

Seasonally adjusted series

— Euro area (EA18) — EU28



Seasonally adjusted unemployment, totals

	Rates (%)					Number of persons (in thousands)				
	Aug 13	May 14	Jun 14	Jul 14	Aug 14	Aug 13	May 14	Jun 14	Jul 14	Aug 14
EA18	12.0	11.6	11.5	11.5	11.5	19 160	18 553	18 424	18 463	18 326
EU28	10.8	10.3	10.2	10.2	10.1	26 387	24 982	24 779	24 776	24 642
Belgium	8.5	8.5	8.5	8.5	8.5	421	420	421	423	423
Bulgaria	12.8	11.5	11.4	11.3	11.3	431	387	381	379	377
Czech Republic	6.9	6.1	6.1	6.1	6.3	368	322	320	319	334
Denmark⁶	7.2	6.4	6.5	6.6	6.7	208	185	188	192	194
Germany⁷	5.3	5.0	5.0	4.9	4.9	2 252	2 147	2 129	2 113	2 101
Estonia⁸	8.1**	7.3	7.3	7.4	:	55**	49	49	50	:
Ireland	12.8	11.7	11.6	11.5	11.4	275	251	248	247	246
Greece	27.6*	27.1	27.0	:	:	1 347*	1 308	1 304	:	:
Spain	26.1	24.7	24.6	24.5	24.4	6 048	5 674	5 632	5 611	5 581
France	10.2	10.2	10.4	10.5	10.5	2 988	2 993	3 052	3 091	3 093
Croatia	18.2	16.9	16.7	16.6	16.5	337	320	313	308	304
Italy	12.4	12.6	12.3	12.6	12.3	3 162	3 229	3 147	3 216	3 134
Cyprus	16.6	15.9	15.8	15.7	15.4	72	68	68	68	67
Latvia⁶	11.8***	10.8	10.8	:	:	118***	108	108	:	:
Lithuania	11.4	11.4	11.4	11.5	11.4	165	169	169	169	167
Luxembourg	5.9	6.2	6.1	6.2	6.1	15	16	16	16	16
Hungary⁸	10.2**	8.1	8.1	7.8	:	449**	363	361	349	:
Malta	6.4	6.0	5.9	6.0	5.9	12	11	11	11	11
Netherlands⁷	7.0	7.0	6.8	6.7	6.6	629	623	605	594	585
Austria⁷	5.0	5.0	5.0	4.8	4.7	219	219	221	214	210
Poland	10.3	9.2	9.1	9.0	8.8	1 782	1 603	1 574	1 549	1 527
Portugal	16.1	14.4	14.1	14.0	14.0	836	744	731	722	725
Romania	7.0	6.9	7.0	7.1	7.1	647	638	641	651	654
Slovenia	9.9	9.5	9.3	9.1	9.1	100	96	95	93	93
Slovakia	14.4	13.4	13.3	13.3	13.3	389	365	361	360	360
Finland⁷	8.1	8.6	8.6	8.6	8.6	216	229	230	229	229
Sweden⁷	8.0	8.0	8.0	7.9	7.9	409	413	412	412	411
United Kingdom⁸	7.7*	6.3	6.2	:	:	2 469*	2 040	1 994	:	:
Iceland⁷	5.6**	5.0	5.0	4.9	:	10**	9	9	9	:
Norway⁸	3.6**	3.2	3.3	3.4	:	92**	87	91	94	:
United States	7.2	6.3	6.1	6.2	6.1	11 307	9 836	9 507	9 689	9 636

: Data not available

* June 2013

** July 2013

*** Q2 2013

Seasonally adjusted youth (under 25s) unemployment

	Rates (%)					Number of persons (in thousands)				
	Aug 13	May 14	Jun 14	Jul 14	Aug 14	Aug 13	May 14	Jun 14	Jul 14	Aug 14
EA18	23.9	23.5	23.4	23.3	23.3	3 542	3 394	3 363	3 351	3 332
EU28	23.5	21.9	21.9	21.7	21.6	5 591	5 121	5 060	5 020	4 989
Belgium	22.7	23.2	23.2	23.2	23.3	94	95	94	94	95
Bulgaria	27.8	24.2	23.7	22.8	22.2	62	50	48	45	44
Czech Republic	19.4	16.4	16.9	16.9	16.6	69	59	61	61	60
Denmark⁶	14.0	12.8	12.7	12.8	12.5	62	55	55	56	55
Germany⁷	7.8	7.8	7.8	7.7	7.6	352	343	340	336	332
Estonia⁸	16.5	16.7	15.2	12.7	:	10	9	8	7	:
Ireland	26.2	25.1	25.1	25.3	25.2	56	48	48	48	48
Greece	58.4	51.6	51.5	:	:	179	167	166	:	:
Spain	55.9	53.1	53.3	53.7	53.7	940	851	840	840	837
France	24.4	23.6	23.9	24.0	24.0	679	650	651	654	654
Croatia⁶	48.9	43.9	43.9	:	:	73	69	69	:	:
Italy	40.6	43.0	43.7	43.2	44.2	672	706	702	707	710
Cyprus⁶	39.9	37.1	37.1	:	:	17	16	16	:	:
Latvia⁶	23.8	21.8	21.8	:	:	21	19	19	:	:
Lithuania	21.7	21.7	21.8	21.7	21.5	28	29	29	29	28
Luxembourg	15.2	15.9	15.6	15.8	15.5	2	3	3	3	2
Hungary⁸	26.9	20.7	21.3	20.9	:	84	68	70	69	:
Malta	12.9	12.8	12.8	13.1	12.7	4	4	3	4	3
Netherlands⁷	11.4	10.8	10.5	10.4	10.1	162	149	145	145	140
Austria⁷	9.2	9.2	9.4	8.8	8.2	54	53	54	51	47
Poland	27.7	23.8	23.4	23.1	22.8	408	357	344	332	323
Portugal	37.1	37.4	36.4	35.5	35.6	148	140	133	126	124
Romania⁶	23.7	24.3	24.3	:	:	166	159	159	:	:
Slovenia⁶	20.9	19.2	19.2	:	:	16	14	14	:	:
Slovakia	33.4	30.8	30.5	30.0	29.9	72	65	64	62	61
Finland⁷	20.0	19.9	19.9	19.8	19.8	66	65	65	64	64
Sweden⁷	23.2	22.7	22.5	22.3	22.1	154	151	150	149	148
United Kingdom⁸	20.8	16.5	16.1	:	:	938	736	713	:	:
Iceland⁷	10.9	9.7	9.7	9.8	:	4	3	3	3	:
Norway⁸	9.4	7.3	7.7	7.8	:	36	27	28	29	:

: Data not available

Seasonally adjusted unemployment rates (%), by gender

	Males					Females				
	Aug 13	May 14	Jun 14	Jul 14	Aug 14	Aug 13	May 14	Jun 14	Jul 14	Aug 14
EA18	11.9	11.5	11.3	11.3	11.2	12.0	11.8	11.8	11.8	11.7
EU28	10.8	10.2	10.1	10.1	10.0	10.9	10.4	10.3	10.3	10.3
Belgium	8.7	9.3	9.3	9.4	9.4	8.2	7.5	7.5	7.4	7.5
Bulgaria	13.5	12.5	12.4	12.4	12.3	12.0	10.4	10.2	10.1	10.1
Czech Republic	5.8	5.0	5.1	5.0	5.2	8.4	7.5	7.3	7.4	7.8
Denmark ⁶	7.3	6.0	6.1	6.4	6.7	7.1	6.9	6.9	6.9	6.6
Germany ⁷	5.6	5.3	5.3	5.2	5.2	4.9	4.7	4.6	4.6	4.6
Estonia ⁸	8.9	7.8	7.7	7.9	:	7.5	6.8	7.0	7.0	:
Ireland	14.9	13.5	13.4	13.2	13.1	10.1	9.6	9.4	9.3	9.3
Greece	24.5	24.0	23.8	:	:	32.0	31.1	31.1	:	:
Spain	25.8	23.9	23.7	23.6	23.4	26.6	25.6	25.5	25.5	25.4
France	10.3	10.5	10.5	10.6	10.7	10.1	9.9	10.2	10.4	10.4
Croatia	18.3	15.5	15.2	14.8	14.6	18.1	18.5	18.4	18.7	18.8
Italy	11.8	11.6	11.3	11.6	11.2	13.1	14.0	13.8	13.9	13.7
Cyprus	17.4	17.1	17.2	17.1	16.9	15.7	14.5	14.4	14.2	13.9
Latvia ⁶	12.4	12.1	12.1	:	:	11.0	9.5	9.5	:	:
Lithuania	12.2	13.1	13.1	13.1	13.1	10.5	9.7	9.7	9.8	9.6
Luxembourg	5.7	6.2	6.1	6.1	6.0	6.2	6.2	6.2	6.2	6.1
Hungary ⁸	10.0	8.0	8.0	7.6	:	10.1	8.2	8.2	8.0	:
Malta	6.5	6.2	6.2	6.3	6.1	6.2	5.6	5.5	5.6	5.5
Netherlands ⁷	7.4	7.1	7.0	6.9	6.7	6.6	6.8	6.6	6.4	6.4
Austria ⁷	5.1	5.0	5.2	5.1	4.8	4.9	4.9	4.8	4.6	4.7
Poland	9.7	8.7	8.6	8.5	8.4	11.0	9.8	9.7	9.5	9.4
Portugal	16.0	14.0	13.5	13.3	13.3	16.2	14.8	14.8	14.7	14.7
Romania	7.6	7.6	7.6	7.8	7.9	6.3	6.1	6.1	6.1	6.1
Slovenia	8.8	8.6	8.5	8.3	8.2	11.2	10.5	10.3	10.2	10.1
Slovakia	14.2	13.2	13.0	13.0	13.0	14.6	13.7	13.6	13.6	13.6
Finland ⁷	8.7	9.2	9.2	9.2	9.2	7.5	7.9	7.9	7.9	7.9
Sweden ⁷	8.1	8.2	8.2	8.2	8.2	7.8	7.7	7.7	7.7	7.6
United Kingdom ⁸	7.9	6.5	6.4	:	:	7.2	6.0	5.8	:	:
Iceland ⁷	6.0	5.1	5.0	5.0	:	5.1	5.0	5.0	4.9	:
Norway ⁸	3.7	3.3	3.4	3.5	:	3.3	3.1	3.2	3.3	:

: Data not available